



Torque Gauge Centor Star Touch Torque Wrench



The tightening torque inspection done to perfection

The Torque Gauge **Centor Star Touch** model with its torque wrench based on the strain gauges technology is now the most advanced torque gauge. Thanks to its accurate sensor and the reliability of its electronic, it is possible to implement torque measurements in all possible situations.

The operators can collect in real time the graph of the Torque vs time on the large color touch screen, without using a computer, and have a complete view of the current test. The torque gauge is also able to perform calculations on demand (minimum, maximum, break, average,...)

Optimized for industrial environment, it provides high-performance with a great ease of use, thanks to its large screen. The clear icon guides the user through the entire configuration in order to setup its test, and menus are available in several languages. From the communication aspect, the Centor Star Touch has a bi-directional RS232 output able to send and receive data from a computer, a USB output at 1000Hz able to send data in real time and as well as a switching output in order to optimize your process.



The **Centor Star Touch** is equipped with the ANDILOG SPIP technology and can read remote force and torque sensors. On one display you can plugin a variety of interchangeable remote torque and force sensors. The torque gauge is compatible with the wide range of Andilog's sensors.

Delivered with its certificate of calibration, including the measurement data in both directions, it is the most advanced instrument designed and built for the most demanding users.

Models and capacities

| MODELS | CAPACITIES | ACCURACY | RESOLUTION |
|---------------|------------|----------|------------|
| CNR CT TW 15 | 15 Nm | 0.075 Nm | 1,5 mNm |
| CNR CT TW 60 | 60 Nm | 0.3 Nm | 6 mNm |
| CNR CT TW 150 | 150 Nm | 0.75 Nm | 15 mNm |

Spécifications

| FEATURES | CENTOR STAR TOUCH | FEATURES | CENTOR STAR TOUCH |
|--|---------------------------|---|---------------------------|
| Accuracy | 0,5 % FS | Internal memory | 1000 results, 1 curve |
| Resolution | 1/10,000 FS | Reversible display | 90° et 180° |
| Data acquisition rate | 5,000 Hz | Operates on rechargeable batteries | ✓ |
| Overload protection | 200% FS | 8 hours of operation without recharging | ✓ |
| Units | Nm, mNm, lbin, lbft, inoz | Fast charge | ✓ |
| Auto-off | Adjustable | Low battery indicator | ✓ |
| Bargraph | ✓ | Metal casing and protective overmould | ✓ |
| Clockwise and counterclockwise peak | ✓ | RS232 output | Current value, min or max |
| Simultaneous display of peak and current reading | ✓ | Data rate RS232 | 100 values per second |
| Affichage de la courbe Force / Temps | ✓ | Data rate USB | 1000 values per second |
| Use of a Foot pedal | ✓ | Analogic output | +/- 1V |
| Tare function | ✓ | Backlit display | ✓ |
| Programmable set point | ✓ | | |
| Statistics | ✓ | | |

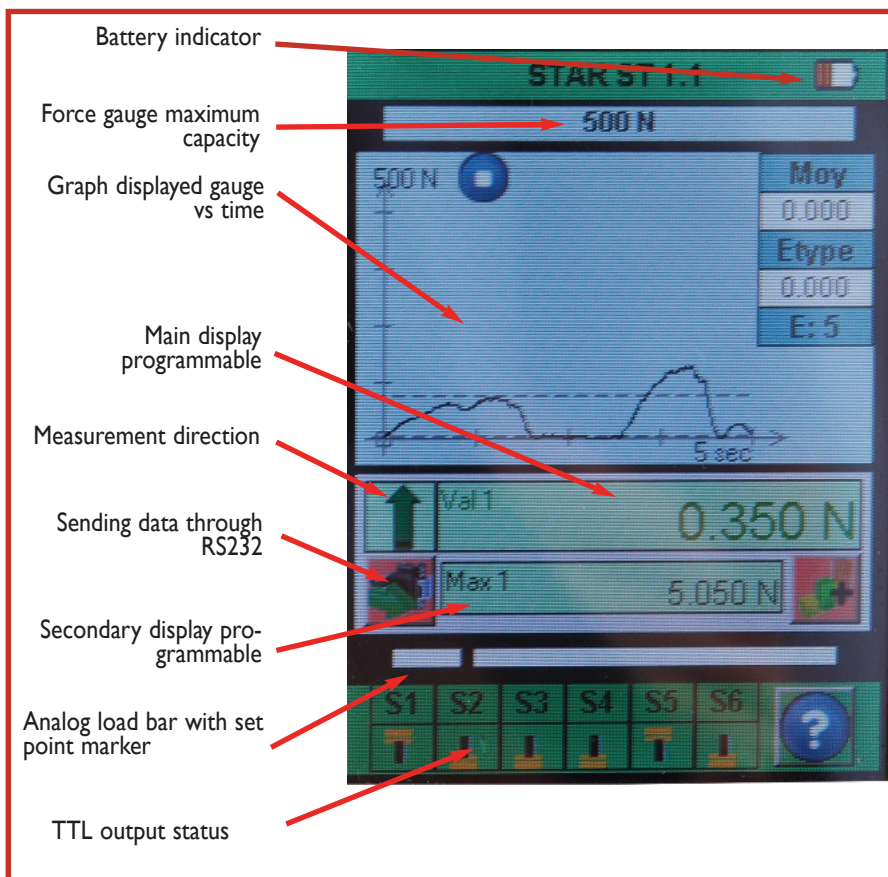
Torque Gauge Centor Star Touch Torque Wrench

TECHNOLOGIES
ANDILOG



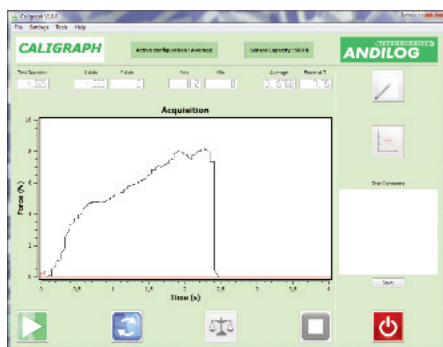
Mesure display

Usability



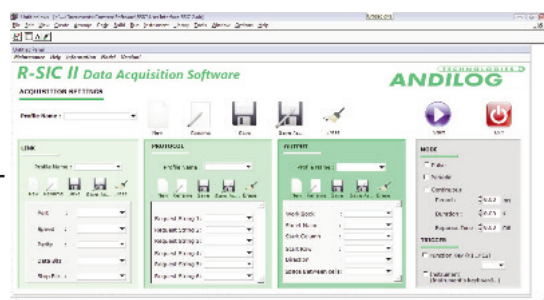
The Centor Star Touch as simple and user-friendly menus, thanks to its large color screen. The setting of the force gauge and the test configurations are done using the touch screen: keyboard, down menu, icons

Options - Software



Compatible with **CALIGRAPH** software: curve acquisition and reporting software for computer. Connects your Centor to CALIGRAPH to achieve in real time the acquisition of your measurements and allow recording of your values on your computer.

Compatible with **RSIC** software: saves your data on an Excel sheet directly through RS232. Allow real time communication as well as unloading the calculation values recorded in the Centor.

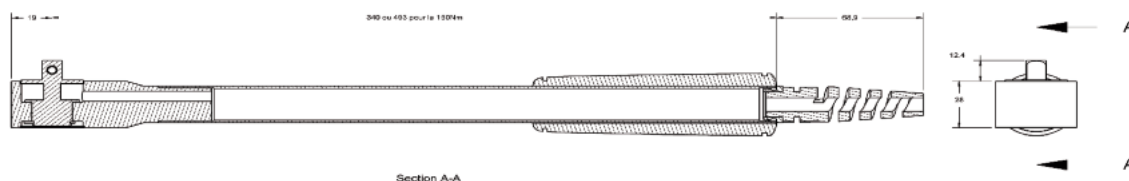
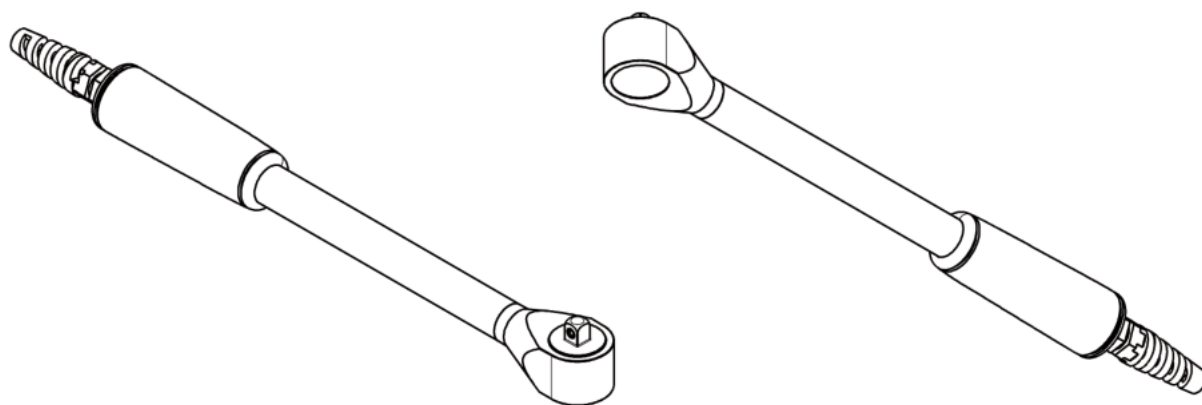




Torque Gauge Centor Star Touch Torque Wrench



Dimensions

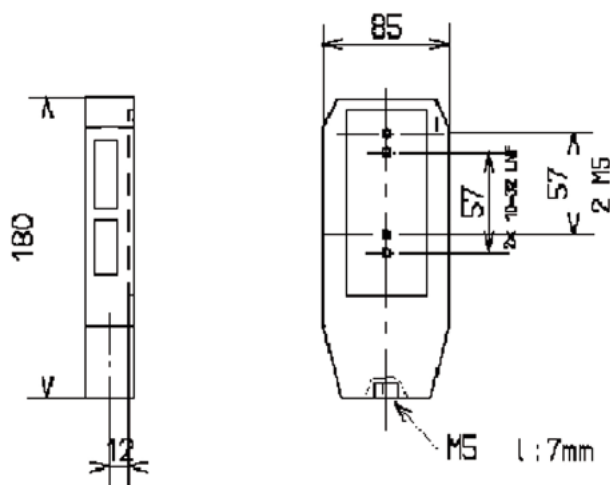


Options - sensors

In option, we have a large variety of sensors in order to comply with your dimensions and applications. Feel free to contact us.



Housing dimensions



ANDILOG Technologies

BP 62001

13845 Vitrolles Cedex 9, FRANCE

info@andilog.com • www.andilog.com

Phone : +33 (0) 820 888 202 • Fax : +33 (0) 820 888 902